

ABSTRACT

We present results from the EDGE survey, a spatially resolved CO(1-0) follow-up to CALIFA, an optical Integral Field Unit (IFU) survey of local galaxies. By combining the data products of EDGE and CALIFA, we study the variation of molecular gas depletion time ( $\tau_{\text{dep}}$ ) on kiloparsec scales in 52 galaxies. We divide each galaxy into two parts: the center, defined as the region within  $0.1 R_{25}$ , and the disk, defined as the region between  $0.1$  and  $0.7 R_{25}$ . We find that 13 galaxies show a shorter  $\tau_{\text{dep}}$  ( $\sim 1$  Gyr) in the center relative to the disk ( $\tau_{\text{dep}} \sim 2.4$  Gyrs), which means the central region in those galaxies is more efficient at forming stars per unit molecular gas mass. This finding implies that the centers with shorter  $\tau_{\text{dep}}$  resemble the intermediate regime between galactic disks and starburst galaxies. Furthermore, the central drop in  $\tau_{\text{dep}}$  is correlated with a central increase in the stellar surface density, suggesting that a shorter  $\tau_{\text{dep}}$  is associated with molecular gas compression by the stellar gravitational potential. We argue that varying the CO-to-H<sub>2</sub> conversion factor only exaggerates the central drop of  $\tau_{\text{dep}}$ .

Keywords: galaxies: star formation — galaxies: structure — ISM: molecules — ISM: abundances.

ABSTRACT

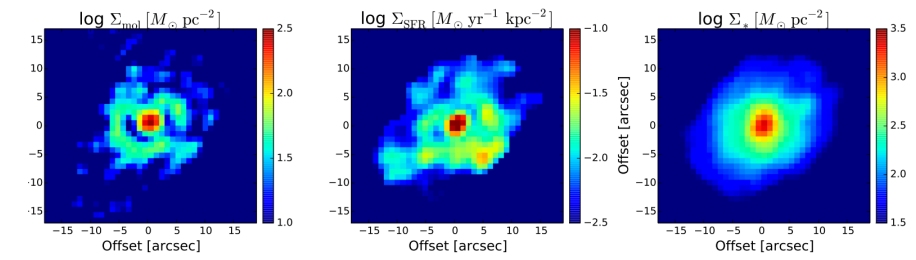
- CALIFAサンプル(近傍銀河の面分光)をCO(1-0)で追観測したEDGEサーベイ
- kpcスケールでの $t_{\text{dep}} (= \Sigma_{\text{gas}} / \Sigma_{\text{SFR}})$ を調べた
- $t_{\text{dep}}$ は 1Gyr@中心 < 2.4Gyr@disk部

SAMPLE

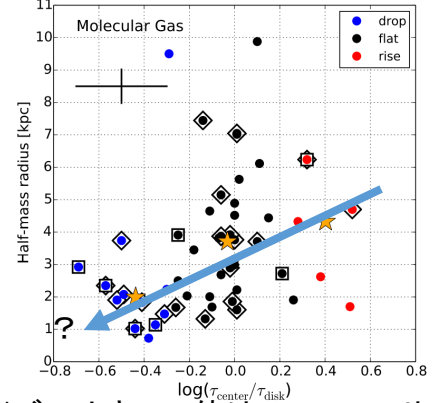
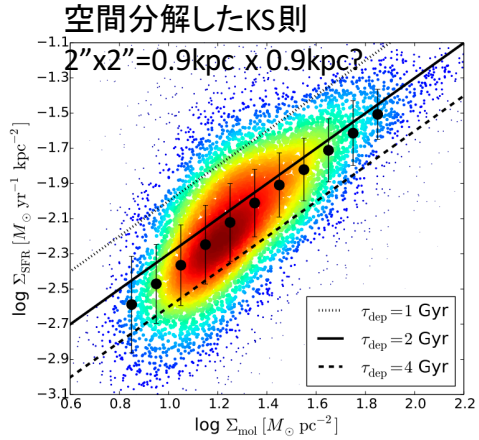
- $0.005 < z < 0.03$
- SF銀河
- inclination < 75deg  $\rightarrow$  52天体

- CARMAでCO(1-0)を取得(beam 4.5"x4.5")
- galactic  $\alpha_{\text{CO}} = 4.4$

- $\Sigma_{\text{SFR}}$ : extinction corrected H $\alpha$
- gas metallicity: O3N2(Marino+16)
- stellar age,  $\Sigma_*$ : pix-to-pix SED fit (Pipe3D, Sanchez+16)



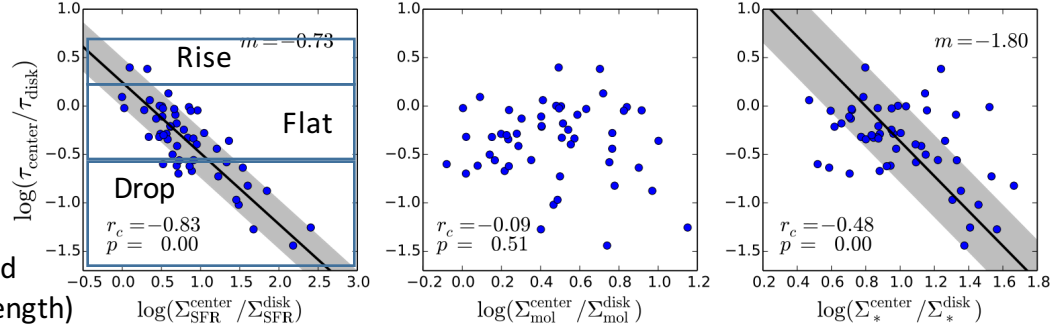
CALIFAで得られたデータの例



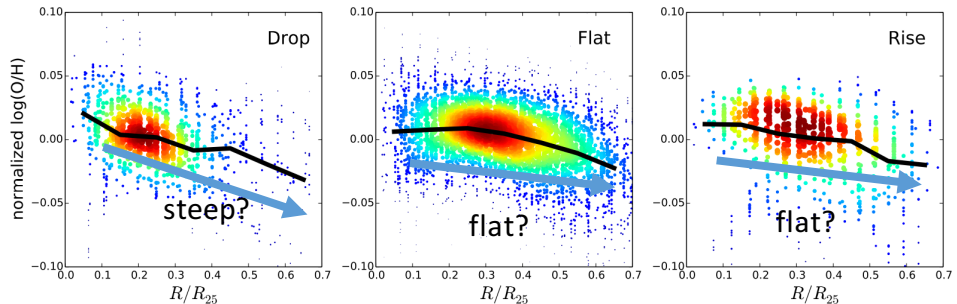
サイズの小さい天体はinteractionやbarの寄与がある。それらによりSFEが高められている？

以下のように定義

- center :  $r < 0.1R_{25}$
- disk :  $0.1R_{25} < r < 0.7R_{25}$
- $R_{25}$ : 25mag/arcsec<sup>2</sup>@B band
- $R_{25} = 4.6 \pm 0.8 l_*$  ( $l_* = \text{scale length}$ )



中心部でtdepが低下するのは、 $\Sigma_{\text{SFR}}$ と $\Sigma_*$ の増加の影響が大きい



中心部でtdepが低下している銀河(Drop)では、metallicity gradientもsteep  
 ← 効率の良い星形成活動で金属量がenhanceされる  
 しかし、gasの金属量はSFHの影響も受けるので、よく分からない

TAOでPa $\alpha$ の強みを活かしたLIRGの観測をするのであれば、ALMAの観測につなげるためにもASTEとかでCOの予備データが欲しい